

certainly many Eastern guns did make trips into the West on horseback, wagon, and even train, with Ohio rifles turning up in Iowa, the Dakotas, Texas, Colorado, California, and many other points West. Some were bored out to larger calibers in places like St. Louis, but others were used "as is" for small game (Hanson 1960:43). I know of one full stock .38 cal. rifle made by Mesheck Moxley of Bellefontaine, Logan County, Ohio (about 24 miles from Sidney) that was purchased and taken to eastern North Dakota by a Swedish immigrant and used for generations to shoot rabbits and sitting waterfowl.

Measurements: (see accompanying photographs)

Overall length:

Barrel: 40 3/8" by 1"; .36 cal.; 2 1/2" tang; a small bit of foliage is rather simply engraved just ahead of the rear sight; rifling is deep and appears hand rifled.

Side plate: 3 1/2" long

Butt plate: 4" high; 1 1/4" wide; 3 1/8" tang (7/16" rounded section, anterior; posterior, 5 flats; 1/2" protrusion at end); held on by one screw through the butt plate tang 2" from posterior and one 1" from bottom of curve.

Set triggers: 4 1/2" trigger plate

Trigger guard: 8 1/16" long, 5/8" at widest bow

Cheekpiece: top width 5 1/4"; bottom cut 3 1/2"

Nose cap: 1 3/8"; flush copper rivet about 1/2" from rear end, through side; muzzle cap set back just a hair from muzzle.

Rear site 10 3/16" from breech

Front site: front of base is 3/4" from muzzle

Patch box: 7 9/16" from anterior point to center of lid where it meets the butt plate; top length from posterior point 8"; bottom length 8 1/4"; box lid 4 1/16" by 7/8" wide; 3/4" deep; release knob is in the upper half of the lid and pushes up to release; spring in upper section of patch box cavity, which was augur bored, then cleaned up with chisels.

Two brass inlays straddling tang: 3" long, 3/4" at breech (both pieces have rococo-esque curves)

Silver wrist piece: 3/4" diameter

German silver cheekpiece star: 1 1/2" long by 3/4" high

Fore stock escutcheon inlays of German silver: 6 forward oval ones about 1"; fancier rear two 1 3/8"; beginning at muzzle end and working back, the escutcheons are 9 1/8", 9", and 8 7/8" apart, measured from each rear keyhole; the first escutcheon is set back 4" from the muzzle.

Brass toeplate: about 3 1/2" by about 1/2" wide - small, squared indent at upper end.

Lock: Marked Josh H (elevated) Goulcher (standing for Joseph Goulcher); floral engraving; lock plate 4 1/2" in length by 7/8" high.

Stock: darkly stained maple, with some curl apparent; lock panel of stock is 5 3/4" long with lock well-centered; about 1/4" mortise around lock; stock about 1 1/2" wide at the set triggers; 1/2" wide along bottom of buttstock; about 13" trigger pull; wrist is about 1 3/8" in height just ahead of the roman nose; roman nose is about 2 1/2" high 1" back from where it joins upper wrist at about a 75 degree angle; sides of fore stock gently rounded.

Brass ramrod pipes: rear pipe 2 3/4" light facets on tube; both forward pipes are 1 1/4" also lightly faceted.

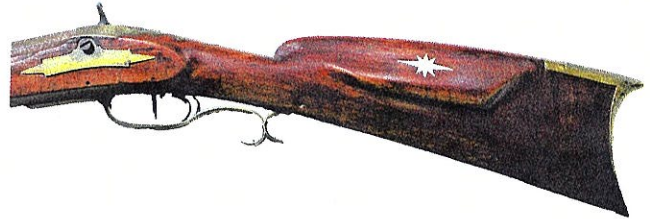
Sources:

Australopithecus, <https://en.wikipedia.org/wiki/Australopithecus>

Baird, John D. (1976). *Hawken Rifles*. Highland Park, New Jersey: The Gun Room Press.

Hanson, Charles E., Jr. *The Plains Rifle*. Highland Park, New Jersey: The Gun Room Press.

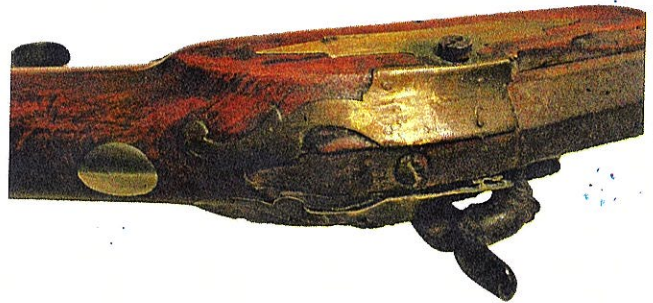
Hutslar, Donald (1973). *Gunsmith of Ohio: Eighteenth and Nineteenth Centuries, Vol. 1*. York, Pennsylvania: George Shumway Publisher



*J. Scharp rifle with distinct "roman nose." Side plate: 3 1/2" long*



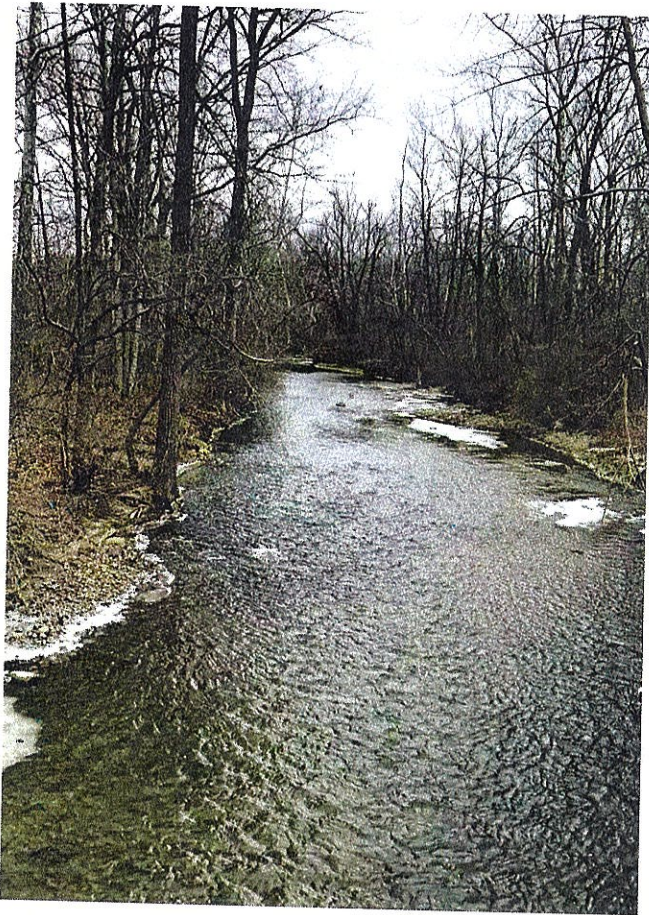
*Marked Josh H (elevated) Goulcher (standing for Joseph Goulcher); floral engraving; lock plate 4 1/2" in length by 7/8" high.*



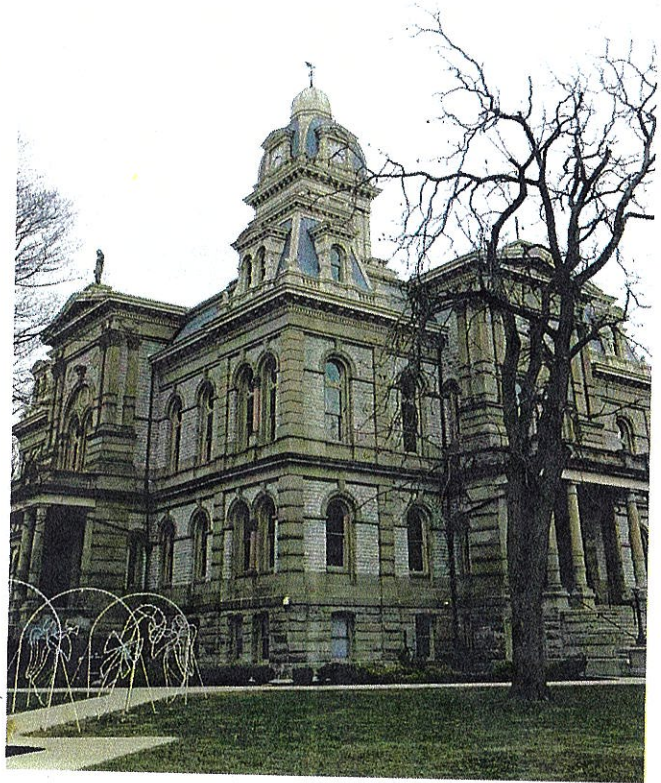
*Two brass inlays straddling tang: 3" long, 3/4" at breech (both pieces have rococo-esque curves)*



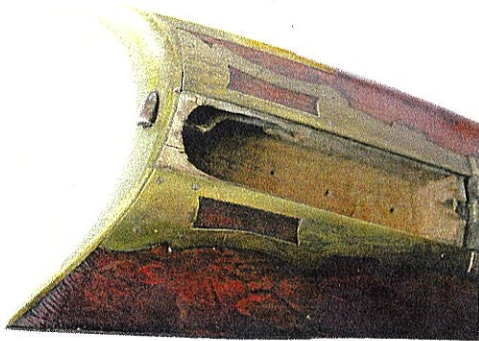
*Signature of J. Scharp*



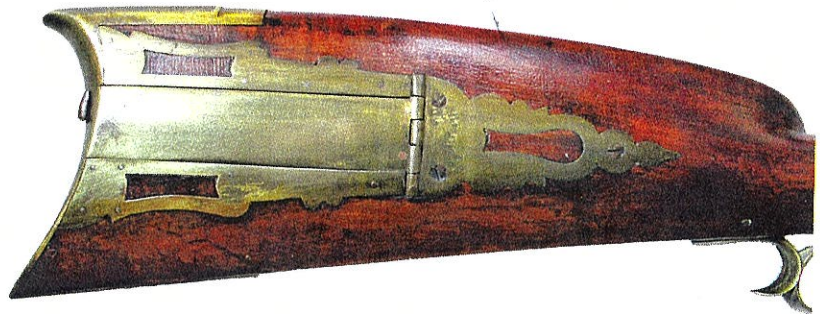
*Greater Miami River, near Tawawa Park, Sydney, Shelby County, Ohio*



*The stately late 19th century Court House, Sydney, Shelby County, Ohio*



*Detail of inside patch box of J. Scharp rifle.*



*Patch box: 7 9/16" from anterior point to center of lid where it meets the butt plate; top length from posterior point 8"; bottom length 8 1/4"; box lid 4 1/16" by 7/8" wide; 3/4" deep; release knob is in the upper half of the lid and pushes up to release; spring in upper section of patch box cavity, which was augur bored, then cleaned up with chisels.*