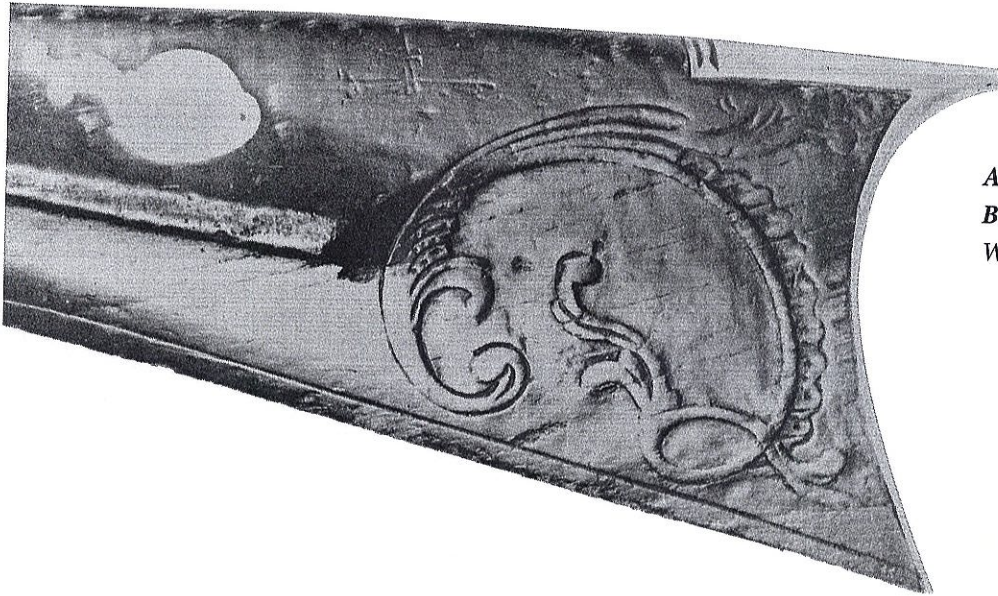


DETAILS OF TWO GEORGE BIDDLE RIFLES

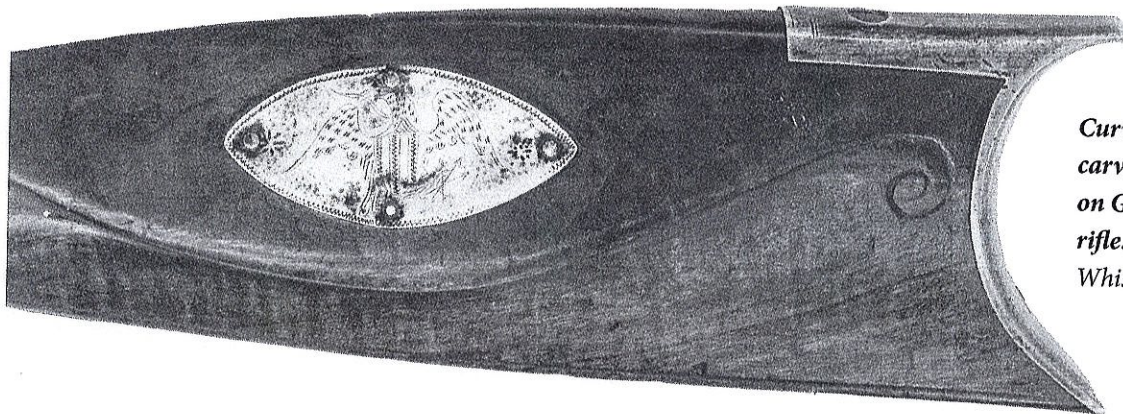
BY MARK BENDER

The AOLRC has many black and white prints—most taken by Dr. James Whisker—in our archives. The two photos presented here are from pictures marked “G. Biddle,” referring to George Biddle (d. 1870), who moved to Tuscarawas county in 1823. He is among several gunsmiths named Biddle working in that area in the 19th century. Figure 1 is a detail of a rifle on p. 46 of Vol 5, Ohio Gunsmiths and Allied Tradesmen.

The present photo, showing nicely done carving, is larger and clearer than the one in the book. Figure 2 (previously unpublished in the AOLRC book series) illustrates a curved cheek-piece with an incise carved finial, and an eagle engraved on a silver inlay. It is interesting to see the range and continuity of styles in works by this maker.



Artistic carving on a George Biddle rifle. Photo by James Whisker



Curved cheek-piece, carving, an inlay on George Biddle rifle. Photo by James Whisker

LADIES AUXILIARY

BARB HARWOOD

Ya'll might feel like I do. If I wanted to live with Summer Southern Florida weather, I'd move there!! Hope everyone is safe, cool and enjoying what you can between the virus limitations and humidity!

Not much to write, all is planned for the 2021 Spring show, Henderson Hall and DaVinci's have us on the calendar for April 3. Same menu and prices for both we hope, we'll have to wait and see.

With what you collected, made and tried to finish in time for the Auction last Spring (no excuses now) LOL and adding new items, we should have a huge Auction next year! Members come through and that's what I love about the club, working together. Not once

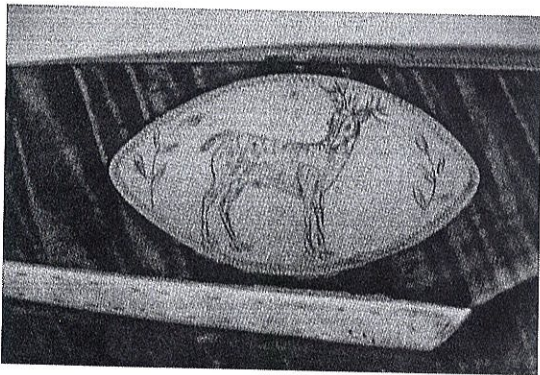
have Alys and I had to work alone on a project, lots of communication and dedication among the ladies. :)

More details about the Auction, meal/tour will be in the 2021 Spring issue, not expecting much change from this years plans.

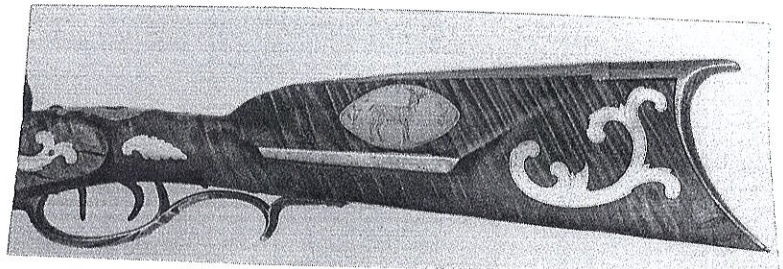
Miss everyone a lot, seems like years since we got together.

If you have questions or ideas, email Barb: harwood@bright.net or Alys: alyswagner@frontier.com If you have changed your email address or phone number, please let us know that too.

LEVI BIDDLE "DEER RIFLE"



Closeups of deer inlay on cheek-piece on an ornate Levi Biddle rifle. The buck deer has spots, so it may be a European fallow deer or Asian sika. The engraving may



have been inspired by a 19th century penmanship copy book, some of which contained exotic animals such as deer, eagles, lions, etc. Mark Bender, Photo by James Whisker

FACEBOOK LINK ANNOUNCEMENT

As noted elsewhere in this newsletter Allen Corbett has done a fantastic job updating the AOLRC website. Visit the site to find dates of upcoming shows, articles, and even items for sale. These images from the site can be found at: <http://www.aolrc.com/>

Please check out the new Facebook link. This promises to be an exciting place to post current news and photos.

Both the AOLRC website and Facebook page make communication much faster and more convenient to access than the newsletter you are holding. Find them online and enhance your AOLRC experience.